

Evolve Global Healthcare Enhanced Yield Fund

December 31, 2025

Annual Management Report of Fund Performance

This annual management report of fund performance contains financial highlights but does not contain the complete annual financial statements of the investment fund. You can get a copy of the annual financial statements at your request, and at no cost, by calling 1-844-370-4884, by writing to us at Evolve Funds, 161 Bay Street, Suite 1210, Toronto, ON, M5J 2S1 or by visiting our website at www.evolveetfs.com or SEDAR+ at www.sedarplus.com. You may also contact us using one of these methods to request a copy of the investment fund's proxy voting policies and procedures, proxy voting disclosure record, or quarterly portfolio disclosure.

Evolve Global Healthcare Enhanced Yield Fund

December 31, 2025

Investment Objective and Strategies

The Evolve Global Healthcare Enhanced Yield Fund (the "Fund") seeks to provide exposure to an equal-weighted portfolio of global healthcare companies while generating enhanced income through a covered call strategy. The Fund aims to replicate, to the extent reasonably possible and before fees and expenses, the performance of the Solactive Global Healthcare 20 Index Canadian Dollar Hedged, or a successor index. To enhance yield and manage risk, the Manager may write covered call options on up to 33% of the portfolio.

Risk

There were no changes to the Fund over the period of this report that materially affected the level of risk associated with an investment in the Fund. Prospective investors should read the Fund's most recent prospectus and consider the description of risks contained therein.

Results of Operations

For the year ended December 31, 2025, the Unhedged ETF Units returned 13.1% versus the Solactive Global Healthcare 20 Index NTR return of 12.2%. The Hedged ETF Units returned 12.7% versus the Solactive Global Healthcare 20 Index Canadian Dollar Hedged return of 10.8%. The US Dollar Unhedged ETF Units returned 18.4% versus the Solactive Global Healthcare 20 Index Canadian Dollar Hedged return of 10.8%. The Hedged Class A Mutual Fund Units returned 11.4% and the Hedged Class F Mutual Fund Units returned 12.6% versus the Solactive Global Healthcare 20 Index Canadian Dollar Hedged return of 10.8%. For a discussion of the relative performance of the Fund as compared to the respective Index, please refer to the "Annual Compound Return" section in the "Management Discussion of Fund Performance". The Fund's net assets were \$330.0MM as at December 31, 2025.

Portfolio Manager Commentary

After several years of lagging the broader market, the healthcare sector may be approaching an inflection point. While the S&P 500 has delivered a 22.94% annualized return over the past three years, the S&P 500 Health Care Sector GICS Level 1 Index gained just 6.24%*, underscoring a prolonged period of underperformance. This disparity has been driven by lingering policy uncertainty, elevated volatility across key healthcare sub-sectors, and a market narrative dominated by artificial intelligence (AI) that diverted capital and investor attention away from more defensive, fundamentally driven areas like healthcare. More recently, however, momentum has begun to shift. In Q4 2025, the S&P 500 healthcare sector index increased by 11.68%, compared with a 2.65% gain for the broader S&P 500*, highlighting the potential inflection point and capital rotation away from big tech and AI-related stocks toward healthcare.¹

The backdrop appears to be shifting. Sentiment in biotech has improved as companies execute on clinical milestones, advance commercial launches, and re-enter the M&A cycle, developments that could spill over into the broader healthcare ecosystem. Policy risk has also eased as more extreme drug-pricing and regulatory scenarios have failed to materialize. According to Goldman Sachs, investor interest in healthcare as a diversification tool is beginning to build, particularly among allocators looking to rebalance portfolios after a narrow, growth-led rally. Together, these factors point to a more constructive outlook and potential opportunity for the healthcare sector moving into 2026.¹

*Bloomberg, as at December 31, 2025

Performance Attribution

For the twelve-month period ending December 31, 2025, Eli Lilly & Company made the biggest contribution to the Fund, followed by Intuitive Surgical Inc. By weight, the Fund's largest holdings were Eli Lilly & Company, Intuitive Surgical Inc., and Merck & Company Inc.

(1) <https://www.goldmansachs.com/pdfs/insights/videos/opportunity-in-healthcare-stocks/transcript.pdf>

Evolve Global Healthcare Enhanced Yield Fund

December 31, 2025

Recent Developments

In 2026, financial markets are operating in an environment increasingly shaped by heightened geopolitical conflict, most notably the developing war in the middle east. The escalation has triggered sharp moves across global markets, including spikes in oil and gas prices, increased demand for safe haven assets, and renewed volatility in equities, bonds, and foreign currencies. While underlying economic activity remains resilient in several regions, higher energy prices and elevated geopolitical uncertainty have added new risks to inflation trajectories and policy expectations. Governments are reassessing defense spending and trade arrangements, while central banks face a more complex balance between managing inflation pressures and supporting growth. Market volatility has intensified across asset classes, particularly in sectors sensitive to energy costs, geopolitical risk, and global supply chains. The duration and broader economic impact of the conflict remain uncertain, and the potential financial implications for investments continue to evolve as conditions develop.

Related Party Transactions

The Manager, a corporation incorporated under the laws of the Province of Ontario, is the trustee, manager, and portfolio advisor of the Fund and is responsible for the day-to-day administration of the Fund. The Fund pays annual management fees to the Manager as consideration for its services. Any management fees paid to the Manager are related party transactions, as the Manager is considered to be a related party to the Fund. The management fees are disclosed in the statements of comprehensive income in the annual financial statements of the Fund and are discussed in greater detail below.

The Fund is permitted to purchase, sell and hold securities of certain issuers that are directly or indirectly related to the Manager. With respect to investment in related issuers, the Manager has relied on the approval that it has received from the Investment Review Committee ("IRC"). The Manager complies with its current policy and procedures regarding investments in related issuers and reports periodically to the IRC.

Management Fees

The Manager is entitled to an annual management fee of 0.45% of the net asset value of the Hedged, Unhedged and US Dollar Unhedged ETF Units and the Hedged Class F Mutual Fund Units and 1.45% of the net asset value of the Hedged Class A Mutual Fund Units of the Fund, accrued daily and generally paid monthly in arrears. For the year ended December 31, 2025, the Fund incurred \$1,362,464 in management fees. These management fees were received by the Manager for the day-to-day operations of the fund, including managing the portfolio, maintaining portfolio systems used to manage the Fund, maintaining the www.evolveetfs.com website, and providing all other services including marketing and promotion.

Administration Fees

The administration fees are calculated based on 0.15% per annum of the average daily net asset value of the Fund. The fees are accrued daily and are generally paid monthly. For the year ended December 31, 2025, the Fund incurred \$450,325 in administration fees. These administration fees were received by the Manager for the following operating expenses of the Fund including but not limited to: mailing and printing expenses for periodic reports to unitholders; fees payable to the index provider, Registrar and Transfer Agent and Custodian; any reasonable out of pocket expenses incurred by the Manager or its agents in connection with their ongoing obligations to the Fund; IRC committee member fees and expenses in connection with the IRC; expenses related to compliance with NI 81-107; fees and expenses relating to voting of proxies by a third party; insurance coverage for the members of the IRC; fees payable to the auditors and legal advisors of the Fund; regulatory filing, stock exchange and licensing fees and CDS fees; costs and expenses of complying with all applicable laws, regulations and policies, including expenses and costs incurred in connection with the continuous public filing requirements such as permitted prospectus preparation and filing expenses; and legal, accounting and audit fees and fees and expenses of the Trustee, Custodian and Manager which are incurred in respect of matters not in the normal course of the Fund's activities. The administration fee paid to the Manager by the Fund may, in any particular period, be less than or exceed the operating expenses that the Manager incurs for the Fund.

Evolve Global Healthcare Enhanced Yield Fund

December 31, 2025

Financial Highlights

The following tables show selected key financial information about the Fund and are intended to help readers understand the Fund's financial performance for the period indicated.

The Fund's Net Assets Per Unit¹

	December 31, 2025 (\$)	December 31, 2024 (\$)	December 31, 2023 (\$)	December 31, 2022 (\$)	December 31, 2021 (\$)
For the periods ended:					
Unhedged ETF Units - Net Assets per Unit					
Net Assets per Unit, beginning of period	23.97	23.80	24.87	25.48	23.16
Increase (decrease) from operations:					
Total revenue	0.56	0.45	0.81	0.75	0.54
Total expenses	(0.23)	(0.25)	(0.29)	(0.26)	(0.24)
Realized gains (losses)	1.20	1.61	2.10	(0.46)	0.66
Unrealized gains (losses)	1.53	0.70	(1.72)	1.18	2.90
Total increase (decrease) from operations²	3.06	2.51	0.90	1.21	3.86
Distributions:					
From dividends	(0.30)	(0.32)	(0.39)	(0.47)	(0.28)
From capital gains	-	(0.75)	(0.41)	-	(0.87)
Return of capital	(2.46)	(1.15)	(1.12)	(1.33)	(0.38)
Total annual distributions³	(2.76)	(2.22)	(1.92)	(1.80)	(1.53)
Net Assets per Unit, end of period	24.16	23.97	23.80	24.87	25.48
Hedged ETF Units - Net Assets per Unit					
Net Assets per Unit, beginning of period	19.28	20.79	21.88	23.59	21.14
Increase (decrease) from operations:					
Total revenue	0.44	0.35	0.72	0.69	0.46
Total expenses	(0.20)	(0.21)	(0.25)	(0.24)	(0.23)
Realized gains (losses)	0.87	(0.07)	1.89	(1.18)	0.19
Unrealized gains (losses)	1.26	0.23	(1.61)	1.10	3.70
Total increase (decrease) from operations²	2.37	0.30	0.75	0.37	4.12
Distributions:					
From dividends	(0.22)	(0.26)	(0.34)	(0.42)	(0.23)
From capital gains	-	(0.73)	(0.44)	-	(0.88)
Return of capital	(2.06)	(1.11)	(1.14)	(1.38)	(0.42)
Total annual distributions³	(2.28)	(2.10)	(1.92)	(1.80)	(1.53)
Net Assets per Unit, end of period	19.27	19.28	20.79	21.88	23.59
US Dollar Unhedged ETF Units - Net Assets per Unit⁴					
Net Assets per Unit, beginning of period	27.04	27.20	28.82	29.80	27.21
Increase (decrease) from operations:					
Total revenue	0.63	0.54	0.94	0.85	0.59
Total expenses	(0.28)	(0.29)	(0.34)	(0.30)	(0.28)
Realized gains (losses)	1.34	1.72	2.45	(0.42)	0.76
Unrealized gains (losses)	1.58	1.34	(2.06)	2.06	3.56
Total increase (decrease) from operations²	3.27	3.31	0.99	2.19	4.63
Distributions:					
From dividends	(0.33)	(0.35)	(0.45)	(0.56)	(0.31)
From capital gains	-	(1.03)	(0.59)	-	(1.09)
Return of capital	(2.86)	(1.50)	(1.55)	(1.99)	(0.52)
Total annual distributions³	(3.19)	(2.88)	(2.59)	(2.55)	(1.92)
Net Assets per Unit, end of period	27.16	27.04	27.20	28.82	29.80

Evolve Global Healthcare Enhanced Yield Fund

December 31, 2025

The Fund's Net Assets Per Unit¹ (cont'd)

For the periods ended:	December 31, 2025 (\$)	December 31, 2024 (\$)	December 31, 2023 (\$)	December 31, 2022 (\$)	December 31, 2021 (\$)
Hedged Class A - Net Assets per Unit					
Net Assets per Unit, beginning of period	16.30	18.08	19.48	21.48	19.59
Increase (decrease) from operations:					
Total revenue	0.37	0.27	0.63	0.61	0.45
Total expenses	(0.33)	(0.39)	(0.43)	(0.44)	(0.44)
Realized gains (losses)	0.72	(0.16)	1.64	(1.06)	0.36
Unrealized gains (losses)	0.89	0.03	(1.44)	(0.13)	2.97
Total increase (decrease) from operations²	1.65	(0.25)	0.40	(1.02)	3.34
Distributions:					
From dividends	(0.03)	-	(0.10)	(0.20)	(0.03)
From capital gains	-	(0.81)	(0.51)	-	(1.06)
Return of capital	(2.25)	(1.29)	(1.31)	(1.60)	(0.44)
Total annual distributions³	(2.28)	(2.10)	(1.92)	(1.80)	(1.53)
Net Assets per Unit, end of period	15.74	16.30	18.08	19.48	21.48
Hedged Class F - Net Assets per Unit					
Net Assets per Unit, beginning of period	17.64	19.19	20.32	22.05	19.85
Increase (decrease) from operations:					
Total revenue	0.39	0.28	0.66	0.63	0.41
Total expenses	(0.19)	(0.20)	(0.21)	(0.22)	(0.21)
Realized gains (losses)	0.75	(0.14)	1.62	(1.21)	0.02
Unrealized gains (losses)	1.21	(0.04)	(0.71)	1.28	3.86
Total increase (decrease) from operations²	2.16	(0.10)	1.36	0.48	4.08
Distributions:					
From dividends	(0.20)	(0.22)	(0.28)	(0.39)	(0.21)
From capital gains	-	(0.73)	(0.41)	-	(0.87)
Return of capital	(2.08)	(1.15)	(1.23)	(1.41)	(0.45)
Total annual distributions³	(2.28)	(2.10)	(1.92)	(1.80)	(1.53)
Net Assets per Unit, end of period	17.42	17.64	19.19	20.32	22.05

- 1 This information is derived from the Fund's audited annual financial statements as at December 31, 2025, 2024, 2023, 2022, and 2021. The Unhedged and Hedged ETF Units effectively began operations on October 23, 2017, the US Dollar Unhedged ETF Units effectively began operations on November 26, 2019, and the Hedged Class A and F Mutual Fund Units effectively began operations on July 7, 2020.
- 2 Net assets and distributions are based on the actual number of units outstanding at the relevant time. The increase (decrease) from operations is based on the weighted average number of units outstanding over the period.
- 3 Distributions were paid in cash or reinvested in additional units of the Fund, or both. Actual distributions may vary slightly owing to rounding.
- 4 Per unit figures are stated in CAD equivalent.

The Fund's Ratios/Supplemental Data

For the periods ended:	December 31, 2025	December 31, 2024	December 31, 2023	December 31, 2022	December 31, 2021
Unhedged ETF Units - Ratios/Supplemental Data					
Total Net Asset Value (\$) ⁵	34,889,270	41,803,868	45,675,066	41,043,080	40,766,891
Number of units outstanding ⁵	1,444,000	1,744,000	1,919,000	1,650,000	1,600,000
Management expense ratio ⁶	0.56%	0.62%	0.68%	0.67%	0.65%
Trading expense ratio ⁷	0.09%	0.07%	0.06%	0.06%	0.06%
Portfolio turnover rate ⁸	78.52%	68.51%	57.04%	73.30%	44.05%
Net Asset Value per unit (\$)	24.16	23.97	23.80	24.87	25.48
Closing market price (\$)	24.19	23.98	23.79	24.86	25.51

Evolve Global Healthcare Enhanced Yield Fund

December 31, 2025

The Fund's Ratios/Supplemental Data (cont'd)

For the periods ended:	December 31, 2025	December 31, 2024	December 31, 2023	December 31, 2022	December 31, 2021
Hedged ETF Units - Ratios/Supplemental Data					
Total Net Asset Value (\$)⁵	260,749,895	205,822,647	181,981,672	189,187,745	154,484,891
Number of units outstanding⁵	13,527,996	10,677,996	8,752,996	8,647,996	6,550,000
Management expense ratio⁵	0.64%	0.65%	0.68%	0.68%	0.67%
Trading expense ratio⁷	0.09%	0.07%	0.06%	0.06%	0.06%
Portfolio turnover rate⁸	78.52%	68.51%	57.04%	73.30%	44.05%
Net Asset Value per unit (\$)	19.27	19.28	20.79	21.88	23.59
Closing market price (\$)	19.27	19.28	20.79	21.91	23.71
US Dollar Unhedged ETF Units - Ratios/Supplemental Data					
Total Net Asset Value (\$)⁵	17,005,372	16,928,508	23,830,911	25,970,927	11,919,429
Number of units outstanding⁵	626,038	626,038	876,038	901,038	400,000
Management expense ratio⁵	0.62%	0.66%	0.68%	0.67%	0.65%
Trading expense ratio⁷	0.09%	0.07%	0.06%	0.06%	0.06%
Portfolio turnover rate⁸	78.52%	68.51%	57.04%	73.30%	44.05%
Net Asset Value per unit (\$)	27.16	27.04	27.20	28.82	29.80
Closing market price (\$)	27.18	27.05	27.24	28.81	29.85
Hedged Class A - Ratios/Supplemental Data					
Total Net Asset Value (\$)⁵	2,163,242	1,520,841	1,032,766	1,025,711	1,507,193
Number of units outstanding⁵	137,476	93,313	57,122	52,641	70,169
Management expense ratio⁶	1.70%	1.80%	1.81%	1.80%	1.81%
Trading expense ratio⁷	0.09%	0.07%	0.06%	0.06%	0.06%
Portfolio turnover rate⁸	78.52%	68.51%	57.04%	73.30%	44.05%
Net Asset Value per unit (\$)	15.74	16.30	18.08	19.48	21.48
Hedged Class F - Ratios/Supplemental Data					
Total Net Asset Value (\$)⁵	15,203,748	11,120,540	6,361,584	1,010,940	619,093
Number of units outstanding⁵	872,960	630,567	331,439	49,747	28,074
Management expense ratio⁵	0.68%	0.68%	0.68%	0.68%	0.68%
Trading expense ratio⁷	0.09%	0.07%	0.06%	0.06%	0.06%
Portfolio turnover rate⁸	78.52%	68.51%	57.04%	73.30%	44.05%
Net Asset Value per unit (\$)	17.42	17.64	19.19	20.32	22.05

5 This information is provided as at December 31, 2025, 2024, 2023, 2022, and 2021.

6 Management expense ratio ("MER") is based on total expenses plus harmonized sales tax (excluding distributions, commissions and other portfolio transaction costs) for the stated period and is expressed as an annualized percentage of daily average net asset value during the period.

7 The trading expense ratio represents total commissions and other portfolio transaction costs expressed as an annualized percentage of average daily net assets during the period.

8 The Fund's portfolio turnover rate indicates how actively the Fund's portfolio manager trades its portfolio investments. A portfolio turnover rate of 100% is equivalent to the Fund buying and selling all of the securities in its portfolio once in the course of the period. The higher the Fund's portfolio turnover rate in a period, the greater the trading costs payable by the Fund in the period, and the greater the chance of an investor receiving taxable capital gains in the period. There is not necessarily a relationship between a high turnover rate and the performance of a fund.

Past Performance

The performance information does not take into account sales, redemption, distribution, income taxes payable by any unitholder or other optional charges that, if applicable, would have reduced returns or performance. The performance information shown assumes that all distributions made by the investment fund in the periods shown were reinvested in additional securities of the investment fund. How the Fund has performed in the past does not necessarily indicate how it will perform in the future.

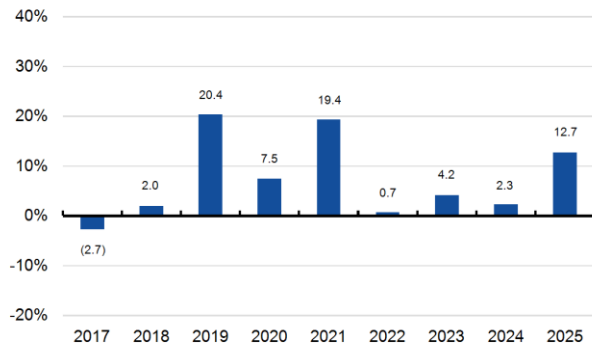
Evolve Global Healthcare Enhanced Yield Fund

December 31, 2025

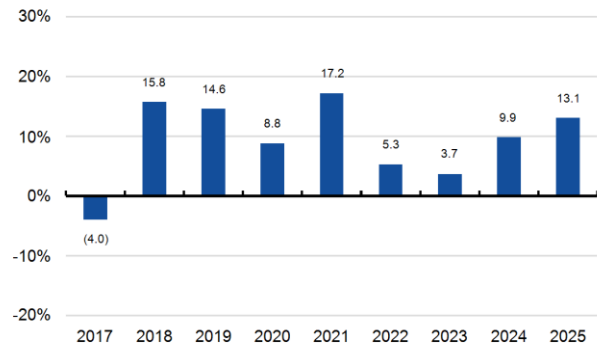
Year-by-Year Returns

The bar chart below shows the Hedged, Unhedged, US Dollar Unhedged ETF Units' and the Hedged Class A and F Mutual Fund Units' performance for each of the financial years shown. The chart shows, in percentage terms, how much an investment made in the Fund on the first day of each financial period would have grown or decreased by the last day of that financial period.

LIFE Hedged ETF Units¹



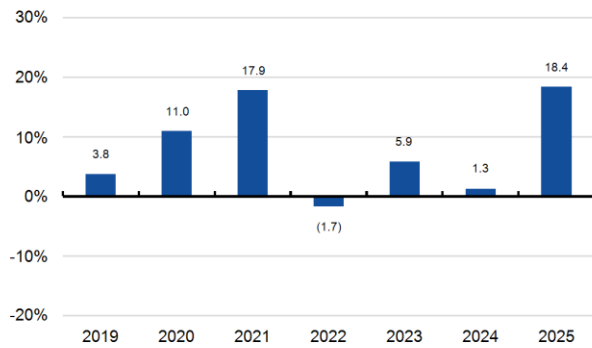
LIFE/B Unhedged ETF Units²



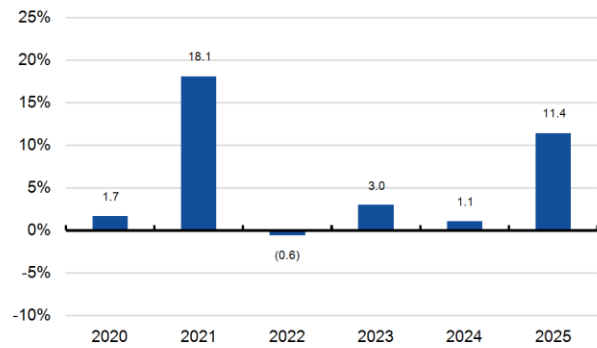
1 The Hedged ETF Units of the Fund effectively began operations on October 23, 2017.

2 The Unhedged ETF Units of the Fund effectively began operations on October 23, 2017.

LIFE/U US Dollar Unhedged ETF Units³



Hedged Class A Mutual Fund Units⁴



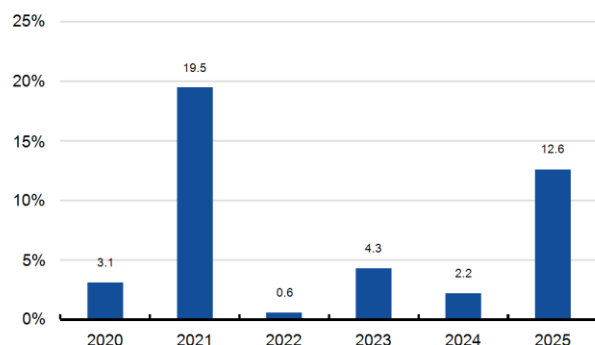
3 The US Dollar Unhedged ETF Units of the Fund effectively began operations on November 26, 2019. Returns presented based on NAV equivalent in USD.

4 The Hedged Class A Mutual Fund Units of the Fund effectively began operations on July 7, 2020.

Evolve Global Healthcare Enhanced Yield Fund

December 31, 2025

Hedged Class F Mutual Fund Units⁵



⁵ The Hedged Class F Mutual Fund Units of the Fund effectively began operations on July 7, 2020.

Annual Compound Return

The table below shows the historical annual compound total return of the Hedged, Unhedged, US Dollar Unhedged ETF Units and the Hedged Class A and F Mutual Fund Units. The returns are for the period ended December 31, 2025. As a basis of comparison, we have provided the performance of Solactive Global Healthcare 20 Index Canadian Dollar Hedged and Solactive Global Healthcare 20 Index NTR (each of which, an "Index", and collectively, the "Indices"). The difference in performance of the Hedged, Unhedged, and US Dollar Unhedged ETF Units and the Hedged Class A and F Mutual Fund Units relative to the respective Index can be attributed primarily to management and administration fees plus applicable sales taxes, and to portfolio trading. The difference in performance of the US Dollar Unhedged ETF Units relative to the Index can also be attributed to the fact that the Index used is hedged to Canadian Dollars while the US Dollar Unhedged ETF Units of the Fund are unhedged and presented in US Dollars. Furthermore, the difference in performance of the Hedged, Unhedged, US Dollar Unhedged ETF Units and the Hedged Class A and F Mutual Fund Units relative to the respective Index can also be attributed to the implementation of the call writing strategy where the Fund tends to outperform in flat or down markets and underperform during sharp market advances. This performance difference can be seen over the period the calls are written, typically with one to two months to expiry, and then resets when new option positions are established.

	Since Inception ¹ (%)	1 Year (%)	3 Year (%)	5 Year (%)
Hedged ETF Units	7.8	12.7	6.3	7.6
Solactive Global Healthcare 20 Index Canadian Dollar Hedged ²	6.4	10.8	4.9	6.4
Unhedged ETF Units	10.1	13.1	8.8	9.7
Solactive Global Healthcare 20 Index NTR ³	10.1	12.2	8.9	10.0
US Dollar Unhedged ETF Units	9.1	18.4	8.3	8.0
Solactive Global Healthcare 20 Index Canadian Dollar Hedged ²	6.4	10.8	4.9	6.4
Hedged Class A Mutual Fund Units	6.1	11.4	5.1	6.4
Solactive Global Healthcare 20 Index Canadian Dollar Hedged ²	6.3	10.8	4.9	6.4
Hedged Class F Mutual Fund Units	7.5	12.6	6.3	7.6
Solactive Global Healthcare 20 Index Canadian Dollar Hedged ²	6.3	10.8	4.9	6.4

- From inception date of October 23, 2017 for the Hedged and Unhedged ETF Units, from inception date of November 26, 2019 for the US Dollar Unhedged ETF Units, and from inception date of July 7, 2020 for the Hedged Class A and F Mutual Fund Units.
- The Solactive Global Healthcare 20 Index Canadian Dollar Hedged is an Index of Solactive AG and is calculated and distributed by Solactive AG. The Index tracks the performance of the Solactive Global Healthcare 20 Index net total return ("NTR") and hedges the currency exposure to Canadian Dollars on a monthly basis via FX forward contracts. The Index is rebalanced monthly and is denominated in Canadian Dollars.
- The Solactive Global Healthcare 20 Index NTR is an Index of Solactive AG and is calculated and distributed by Solactive AG. The Index provides exposure to the largest global healthcare companies classified under the FactSet Sector Health Technology on an equally-weighted basis. The Index is calculated as a net total return index, is rebalanced quarterly and is denominated in Canadian Dollars.

Evolve Global Healthcare Enhanced Yield Fund

December 31, 2025

Summary of Investment Portfolio

All Positions

	Percentage of Net Asset Value (%)
Security	
Eli Lilly & Company	6.2
Intuitive Surgical Inc.	6.0
Merck & Company Inc.	5.7
Danaher Corporation	5.5
Roche Holding AG, ADR	5.3
Amgen Inc.	5.3
Thermo Fisher Scientific Inc.	5.2
Johnson & Johnson	5.1
AstraZeneca PLC, ADR	5.1
Novartis AG, ADR	4.9
Medtronic PLC	4.7
Sanofi SA, ADR	4.7
Gilead Sciences Inc.	4.7
Pfizer Inc.	4.7
Boston Scientific Corporation	4.6
AbbVie Inc.	4.6
Stryker Corporation	4.5
Abbott Laboratories	4.4
Novo Nordisk A/S, ADR	4.3
Essilor International SA, ADR	4.1
Total	99.6

Industry Allocation

Portfolio by Category	Percentage of Net Asset Value (%)
Equities	
Healthcare	99.6
Derivative Assets	0.1
Derivative Liabilities	(0.1)
Cash and Cash Equivalents	1.5
Other Assets, less Liabilities	(1.1)
Total	100.0

The summary of Investment Portfolio may change due to the ongoing portfolio transactions of the Fund. Updates are available quarterly by visiting our website at www.evolveetfs.com.



Evolve Global Healthcare Enhanced Yield Fund