

**TSX****LEAD****EVOLVE FUTURE LEADERSHIP  
FUND**

**The blue chip companies of today and the future leaders of tomorrow.**

**TICKERS:** LEAD (Hedged); LEAD.B (Unhedged); LEAD.U (USD)**MANAGEMENT FEE<sup>1</sup>:** 0.75%**EXCHANGE:** Toronto Stock Exchange (TSX)**DISTRIBUTION FREQUENCY:** Monthly**INCEPTION DATE:** September 10, 2020**TARGET YIELD<sup>2</sup>:** 7.00%

LEAD seeks to provide investors with long-term capital appreciation by investing primarily in a diversified mix of equity securities of companies located domestically or internationally that are determined to be leaders in sectors that stand to benefit from medium and long term economic trends.

**REASONS TO BUY:****1. PORTFOLIO OF BLUE CHIP  
COMPANIES**

- Actively managed
- Diversified portfolio
- Avg. market cap \$349 Billion

**2. GLOBAL****3. COVERED CALL STRATEGY**

- Helps mitigate risk
- Increased yield potential
- Target yield of 7.00%<sup>2</sup>

<sup>1</sup>Plus applicable sales taxes.

<sup>2</sup>Estimate only. Actual yield changes daily based on market conditions. Target yield is gross of MER.  
Source: Bloomberg, Morningstar, as at July 31, 2022.

INVESTING IN FOUR CATEGORIES OF LEADERSHIP



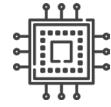
HEALTHCARE



MEDIA & ENTERTAINMENT

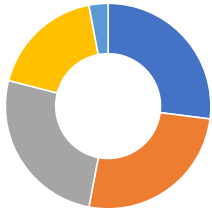


FINANCE



TECHNOLOGY

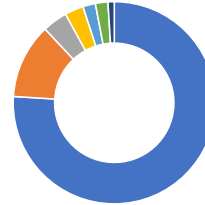
CATEGORY ALLOCATION\*:



NAME	WEIGHT
HEALTHCARE	28%
FINANCE	27%
TECHNOLOGY	22%
ENTERTAINMENT	15%
FUNDS	6%

\* Excludes cash allocation.

GEOGRAPHIC ALLOCATION\*:



NAME	WEIGHT
UNITED STATES	76%
GLOBAL	11%
CANADA	8%
SINGAPORE	1%
SWEDEN	1%
GERMANY	1%
DENMARK	1%

PERFORMANCE (%)

TOTAL RETURNS*	1 MTH	3 MTH	6 MTH	YTD	1 YR	SI**
LEAD (HEDGED)	10.09	-0.42	-14.64	-24.91	-24.42	-3.55
LEAD.B (UNHEDGED)	9.66	-0.48	-13.87	-23.95	-22.42	-4.38
LEAD.U (USD)	10.23	-0.16	-14.50	-24.88	-24.60	-2.84

Source: Bloomberg, as at July 31, 2022. \*\*Performance since inception of LEAD, LEAD.B and LEAD.U on September 10, 2020.

TOP 10 HOLDINGS:



As at July 31, 2022.

Scotia Plaza, 40 King Street West, Suite 3404, Toronto ON M5H3Y2

416.214.4884 | 1.844.370.4884 | www.evolveetfs.com

\*For the period ending July 31, 2022. The indicated rates of return are the historical annual compound total returns net of fees (except for figures of one year or less, which are simple total returns) including changes in per unit value and reinvestment of all dividends or distributions and do not take into account sales, redemption, distribution or optional charges or income taxes payable by any securityholder that would have reduced returns. The rates of return shown in the table are not intended to reflect future values of the ETF or returns on investment in the ETF. ETFs are not guaranteed, their values change frequently, and past performance may not be repeated.

Commissions, trailing commissions, management fees and expenses all may be associated with exchange traded funds (ETFs) and mutual funds. Please read the prospectus before investing. There are risks involved with investing in ETFs and mutual funds. Please read the prospectus for a complete description of risks relevant to the ETF and mutual fund. Investors may incur customary brokerage commissions in buying or selling ETF and mutual fund units. Investors should monitor their holdings, as frequently as daily, to ensure that they remain consistent with their investment strategies.