



**TSX**

**LEAD**

# EVOLVE FUTURE LEADERSHIP FUND

The blue chip companies of today and the future leaders of tomorrow.

TICKERS: LEAD (Hedged); LEAD.B (Unhedged); LEAD.U (USD)	MANAGEMENT FEE <sup>1</sup> : 0.75%
EXCHANGE: Toronto Stock Exchange (TSX)	DISTRIBUTION FREQUENCY: Monthly
LISTING DATE: September 14, 2020	TARGET YIELD <sup>2</sup> : 7.00%

LEAD seeks to provide investors with long-term capital appreciation by investing primarily in a diversified mix of equity securities of companies located domestically or internationally that are determined to be leaders in sectors that stand to benefit from medium and long term economic trends.

## REASONS TO BUY:

### 1. PORTFOLIO OF BLUE CHIP COMPANIES

- Actively managed
- Diversified portfolio
- Avg. market cap \$361 Billion

### 2. GLOBAL



### 3. COVERED CALL STRATEGY

- Helps mitigate risk
- Increased yield potential
- Target yield of 7.00%<sup>2</sup>

<sup>1</sup>Plus applicable sales taxes.

<sup>2</sup>Estimate only. Actual yield changes daily based on market conditions. Target yield is gross of MER.

Source: Bloomberg, Morningstar, as at June 30, 2021.

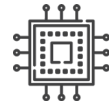
## INVESTING IN FOUR CATEGORIES OF LEADERSHIP



HEALTHCARE

MEDIA &  
ENTERTAINMENT

FINANCE



TECHNOLOGY

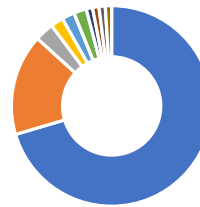
## CATEGORY ALLOCATION\*:



NAME	WEIGHT
HEALTHCARE	26%
TECHNOLOGY	26%
FINANCE	25%
ENTERTAINMENT	23%

\* Excludes cash allocation.

## GEOGRAPHIC ALLOCATION\*:



NAME	WEIGHT
UNITED STATES	71%
GLOBAL	16%
CHINA	3%
FRANCE	2%
JAPAN	2%
SINGAPORE	2%
DENMARK	2%
SWEDEN	1%
CANADA	1%
GERMANY	1%

## TOP 10 HOLDINGS:



As at June 30, 2021.

Scotia Plaza, 40 King Street West, Suite 3404, Toronto ON M5H3Y2

416.214.4884 | 1.844.370.4884 | www.evolveetfs.com

Commissions, trailing commissions, management fees and expenses all may be associated with exchange traded funds (ETFs) and mutual funds. Please read the prospectus before investing. ETFs and mutual funds are not guaranteed, their values change frequently, and past performance may not be repeated. There are risks involved with investing in ETFs and mutual funds. Please read the prospectus for a complete description of risks relevant to the ETF and mutual fund. Investors may incur customary brokerage commissions in buying or selling ETF and mutual fund units. Investors should monitor their holdings, as frequently as daily, to ensure that they remain consistent with their investment strategies.